



JACK PRO RIDER ASD

**pavanello**  
RACING TEAM



FCI  
FEDERAZIONE  
CICLISTICA  
ITALIANA

**INTERNAZIONALI  
D'ITALIA  SERIES**

**X C O M T B**

## XCO DEL MONTELLO – RIVE DEGLI ANGELI

*Nervesa della Battaglia (TV – Italy)*

**31<sup>th</sup> May 2025**

**UCI INTERNATIONAL C1**

# TECHNICAL GUIDE

English version



## TABLE OF CONTENTS

<b>1. RACE PRESENTATION</b> .....	3
<b>2. ORGANISATION</b> .....	3
2.1 Local organizing committee .....	3
2.2 Press office .....	3
2.3 Commissaires Panel .....	3
<b>3. LOCATION</b> .....	3
3.1 Venue location .....	3
3.2 Place details .....	3
3.3 Hotel and accomodations .....	4
3.4 How to get in Nervesa della Battaglia (TV) .....	4
<b>4. RACE INFORMATION</b> .....	5
4.1 General information.....	5
4.2 Admitted categories.....	5
4.3 Entry fees .....	5
4.4 Registration .....	5
4.5 Track information.....	6
4.6 Provisional number of laps .....	6
4.7 Competition schedule .....	6
4.8 Confirmation / License check.....	7
4.11 Team manager meeting.....	7
4.12 Timekeeping.....	7
4.9 Start procedure .....	7
4.10 Technical / Feed zones.....	7
4.11 Anti doping.....	7
4.13 Awards ceremonies.....	7
4.14 Prizes money .....	8
4.15 UCI MTB XCO points.....	8
<b>5. LOGISTICS</b> .....	9
5.1 Team area .....	9
5.2 Camper area.....	9
5.3 Parking .....	9
5.3 Showers and bike washing.....	9
<b>6. MEDICAL ASSISTANCE AND HOSPITALS</b> .....	9
<b>7. VENUE MAP</b> .....	10
<b>8. RACE MAP</b> .....	11



The Piave River, marking the eastern boundary of the village, begins its journey through the Venetian plain here after traversing the Quartier del Piave.

Nervesa della Battaglia and the Montello region offer a wide range of outdoor activities. The ancient paths, once used by locals, are now popular destinations for hikers and cyclists who immerse themselves in the beauty of the landscape, characterized by oak, chestnut, and beech forests, and in a rich historical, cultural, and culinary heritage.

The Montello and its surrounding hills are a beloved destination for cyclists of all backgrounds. Road cyclists enjoy numerous scenic routes and challenging climbs, attracting a diverse range of athletes and fans. Mountain bikers have over 200 kilometres of trails at their disposal, offering a variety of terrains suitable for all skill levels.

The renowned *XCO del Montello* race circuit, located within the "Rive degli Angeli" estate of the "Bosco del Montello" natural park, features a challenging mix of dirt sections, tree trunks, and natural jumps, making it a destination for international competitions.

### 3.3 HOTEL AND ACCOMODATIONS

The region where Nervesa della Battaglia is located is strongly oriented towards tourism.

The teams will find a wide range of accommodation options available, including various types of hotels, guesthouses, and more. To find the best deals, we recommend using an online booking engine or referring to this link:

<https://www.pavanelloracingteam.it/booking/>

### 3.4 HOW TO GET IN NERVESA DELLA BATTAGLIA (TV)

#### By train

- Susegana railway station - 13 km
- Spresiano railway station - 15 km
- Montebelluna railway station - 18 km
- Conegliano railway station - 22 km
- Treviso railway station – 26 km

#### By car

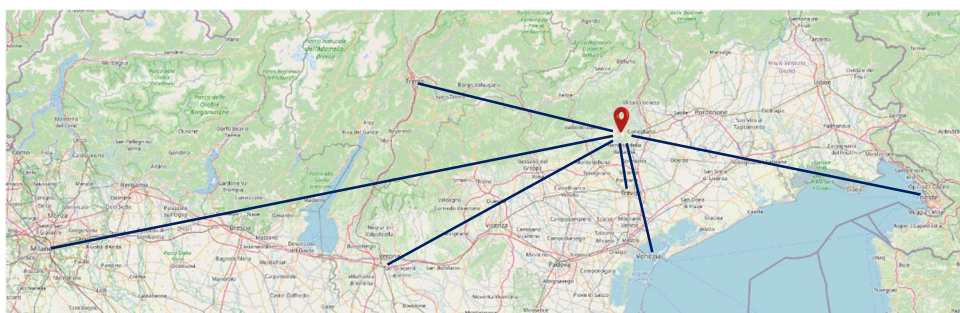
- From the east (Trieste): E70/A28 Highway direction Portogruaro/Conegliano/Pordenone exit Conegliano. Take the SS13 to Susegana/Ponte della Priula/Nervesa della Battaglia.
- From the west (Milan): A4/A31/SPV Highway direction Piovone Rocchette/Pedemontana Veneta exit Povegliano. Take the SP90/SP57/SP248 to Nervesa della Battaglia.
- From the north (Bolzano, Trento): SP350/A31/SPV Highway direction Pedemontana Veneta exit Povegliano. Take the SP90/SP57/SP248 to Nervesa della Battaglia.
- From the south (Bologna, Venezia): A4/A27 Highway direction Belluno and SPV until exit Povegliano. Take the SP90/SP57/SP248 to Nervesa della Battaglia.

#### By plane

- Treviso: "Antonio Canova" Airport (TSF) 27 km - international low-cost airport
- Venice: "Marco Polo" Airport (VCE) 50 km - international airport

#### Distances

- from Treviso 25 km
- from Venice 65 km
- from Verona 150 km
- from Milan 300 km
- from Trieste 170 km
- from Trento 150 km



## 4. RACE INFORMATION

### 4.1 GENERAL INFORMATION

Name of the event	Date	UCI class	Categories
XCO del Montello – Rive degli Angeli 3# Internazionali d'Italia Series	Saturday 31st May, 2025	C1	OPEN M/W (Elite + Under 23) JUNIOR M/W

### 4.2 ADMITTED CATEGORIES

Category	Age	Front/back number color
OPEN MEN (Elite + U23)	> 19	White/Black
OPEN WOMEN (Elite + U23)	> 19	Pink/Black
JUNIOR MEN	17-18	Yellow/Black
JUNIOR WOMAN	17-18	Pink/Black

### 4.3 ENTRY FEES

The registration fee is € 25,00 for men and women (all categories).

**No registration fee is required for UCI MTB ELITE teams.**

The registration fee must be paid in advance via bank transfer before the registration deadline (proof of payment will be required).

**On-site registration will not be accepted.**

Bank details:

**IBAN: IT 42 I 08327 62730 000 000 800189**

**Account holder: Jack Pro Rider A.S.D.**

**Payment reference: name of the team**

Please send a copy of the bank transfer to [iscrizioni@xcdelmontello.it](mailto:iscrizioni@xcdelmontello.it)

**No deposit will be required for the transponder.** We recommend that athletes/teams return the transponder after the race.

### 4.4 REGISTRATION

- **Italian riders:** Register athletes through the FCI system “Fattore K” code 174233 <https://fciksport.kgroup.eu/Fci/>
- **Foreign Riders:** Participation by invitation only. Teams must register riders on the event website: <https://www.internazionaliditaliaseries.it/en/registration/>  
race: RIVE DEGLI ANGELI XCO - Nervesa Della Battaglia

**Registration deadline: Tuesday, 27<sup>th</sup> May 2025 at 24:00 (CET)**

#### 4.5 TRACK INFORMATION

Start loop: 1,2 km  
Lap length: 3,8 km  
Overall climb per lap: 130 meters  
Technical/Feed Zones: 2  
Terrain: 100% off-road

#### 4.6 PROVISIONAL NUMBER OF LAPS

Category	Laps	Distance
OPEN MEN (Elite + U23)	Start loop + 7 laps	27,8 km
OPEN WOMEN (Elite + U23)	Start loop + 6 laps	24,0 km
JUNIOR MEN	Start loop + 6 laps	24,0 km
JUNIOR WOMEN	Start loop + 5 laps	20,2 km

**The final confirmation of the number of laps will be provided by the PCP during the Team Manager Meeting presentation and confirmed again before the start of each race.**

#### 4.7 COMPETITION SCHEDULE

FRIDAY, 30 MAY 2025		
16:00	18:30	License check (ONLY for UCI categories)
19:00		Online publication "Team Manager Meeting"
SATURDAY, 31 MAY 2025		
08:30	13:00	License check (ONLY for UCI categories and up to 1 hour before the start of each race)
08:30	09:30	Official training ( <b>handlebar and back number mandatory</b> )
10:00	11:00	UCI race JUNIOR M
11:45	13:00	UCI race OPEN W and JUNIOR W (start with 2' gap from OPEN W)
14:00	15:30	UCI race OPEN M

**The call up boxes will be closed 20' before the start**

#### IMPORTANT:

- The course will be fully set up (barriers, signs) and accessible starting at least on Thursday, May 29. Access will be permitted strictly at one's own risk, with no liability on the part of the organizers. Maximum caution is advised, as during this phase the course will not be monitored by marshals or medical personnel.
- On Friday, May 30, the course will host the Italian Team Relay Championships. Therefore, from 12:30 to 18:00 (or until the event concludes), the course will not be accessible.

#### During official training sessions:

- riders must display both the back number and handlebar number (front plate), and wear helmet. E-bikes (EPAC) are not permitted.

- A coach of a team wishing to preview the race course must request a handlebar number by filling out a form available at the race office. The coach must also possess a valid coaching license and wear a helmet. E-bikes (EPAC) are not permitted.

#### 4.8 CONFIRMATION / LICENSE CHECK

The license checks and the distribution of race numbers (handlebar number, back number, timing chip) will take place at the race office located near the finish line, during the hours indicated in the race program (section 4.7). The collection must be done by a single representative for each team.

Italian teams must present a copy (digital is acceptable) of the registered participants through the federal system "Fattore K." All teams are requested to bring a copy (digital is acceptable) of the payment receipt.

**Please note that registration and/or payment on-site is not allowed. Both registration and payment must be completed by Tuesday, 27/05/2025, at 24:00**

#### 4.11 TEAM MANAGER MEETING

There will be no team managers' meeting.

All information will be distributed via a communiqué on the Internazionali d'Italia Series website ([www.internazionaliiditaliaseries.it](http://www.internazionaliiditaliaseries.it)) and event social media pages. This information will be available starting Friday, 30th May, 2025, at 19:00 (or after the PCP's track inspection).

#### 4.12 TIMEKEEPING

Timekeeping services will be provided by: EvoData srl Via Sumatra 9, I - 20157 Milano (MI) <http://evodata.it>

#### 4.9 START PROCEDURE

All riders are required to be in the call-up boxes 20 minutes before the race start. The start list will be determined according to the latest published XCO UCI Individual Ranking for UCI categories, and by drawing lots for all other riders

#### 4.10 TECHNICAL / FEED ZONES

Feed and technical assistance are only allowed in the Feed and Technical Zones. Access to the FTZ will be granted only to individuals with a pass.

Passes for the mechanical and feed areas will be distributed to teams during riders' registration. Those without passes will not be able to use the service and will be excluded from the technical support area in accordance with UCI regulations.

The location and number of FTZs will be confirmed by the commissaires in the communiqué published following the track inspection.

#### 4.11 ANTI DOPING

The anti-doping station will be located in the Anti-doping room at B&B VIRGINIO HOUSE, Via Eligio Porcu 21, Nervesa della Battaglia (450 meters from the finish line).

#### 4.13 AWARDS CEREMONIES

The awards ceremony will take place after each race. The top 5 athletes in the following categories will be awarded: Junior Men, Open Women, Junior Women, Open Men

Unless otherwise stated, riders shall appear at official ceremonies wearing their competition clothing.

#### 4.14 PRIZES MONEY

Position	Open M/W	Junior M/W
1	€ 600,00	€ 130,00
2	€ 500,00	€ 100,00
3	€ 400,00	€ 80,00
4	€ 300,00	€ 65,00
5	€ 250,00	€ 55,00
6	€ 200,00	€ 45,00
7	€ 150,00	€ 40,00
8	€ 125,00	€ 30,00
9	€ 100,00	€ 25,00
10	€ 50,00	€ 20,00
<b>Total prize pool</b>	<b>€ 5.350,00</b>	<b>€ 1.180,00</b>

The prize money for UCI categories will be paid via bank transfer. Athletes must complete a form with their bank details and phone number to be contacted if necessary.

The form is available on the website [www.internazionaliditaliaseries.it](http://www.internazionaliditaliaseries.it) in the "Money Prize Form" section.

#### IMPORTANT:

- The form must be submitted strictly within 15 days of the event's conclusion. After this period, the payment of the prize money is not guaranteed.
- The prize may be subject to withholding tax according to the regulations in force at the time of the event.

#### 4.15 UCI MTB XCO POINTS

Position	Open M/W	Junior M/W
1	60	20
2	40	18
3	30	16
4	25	14
5	20	12
6	18	10
7	16	8
8	14	6
9	12	4
10	10	2
11	8	---
12	6	---
13	4	---
14	2	---
15	1	---



## 5. LOGISTICS

### 5.1 TEAM AREA

Teams wishing to book a space in the Team Area must fill out the form on the organization's website:

<https://www.pavanelloracingteam.it/xc-del-montello/area-team/>

We ask teams to reserve space for only one car/van to be parked near their Team Tent. All other vehicles must be parked in the public parking area.

Only accredited teams are allowed to enter the Team Area.

### 5.2 CAMPER AREA

In the event zone, there are several areas where campers can park, including overnight stays. These are not equipped areas (there is no electricity or other services). Booking is not required.

The interactive map of the camper areas can be found at the following link:

<https://www.pavanelloracingteam.it/xc-del-montello/info/>

### 5.3 PARKING

The public car park will be located near the track and marked with appropriate signs.

The interactive map of the parking areas can be found at the following link:

<https://www.pavanelloracingteam.it/xc-del-montello/info/>

### 5.3 SHOWERS AND BIKE WASHING

Showers are located as indicated on the map. A bike washing service will be available at the venue. Both are located near the finish area.

## 6. MEDICAL ASSISTANCE AND HOSPITALS

During official training sessions and competitions, a medical service will be provided, consisting of:

1 doctor, 2 ambulances each equipped with 2 paramedics (see map), and 1 advanced medical station (near the finish line).

#### Nearest hospitals:

##### **Ospedale "San Valentino" di Montebelluna**

Via Togliatti, 1 - 31044 Montebelluna (TV)

Phone +39 0423 6111

15 km (22 minutes) from the race site

##### **Ospedale "Ca' Foncello" di Treviso**

Piazzale dell'Ospedale, 1 - 31100 Treviso (TV)

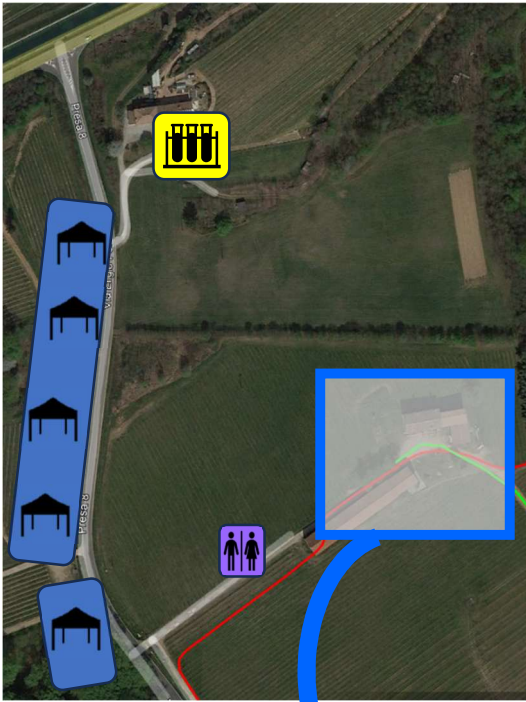
Phone +39 0422 322 111

29 km (38 minutes) from the race site

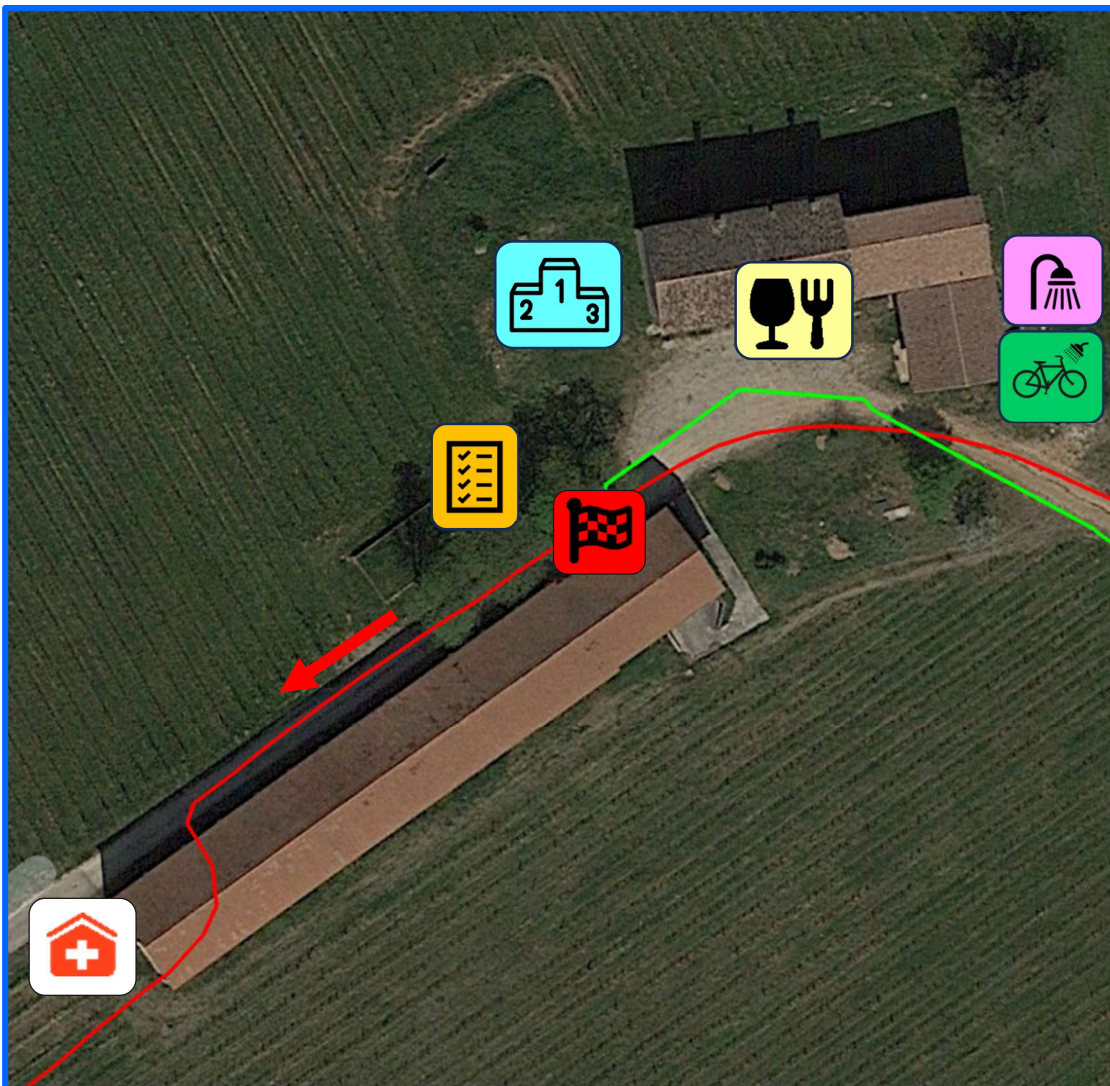
**EMERGENCY CALL NUMBER: 112**



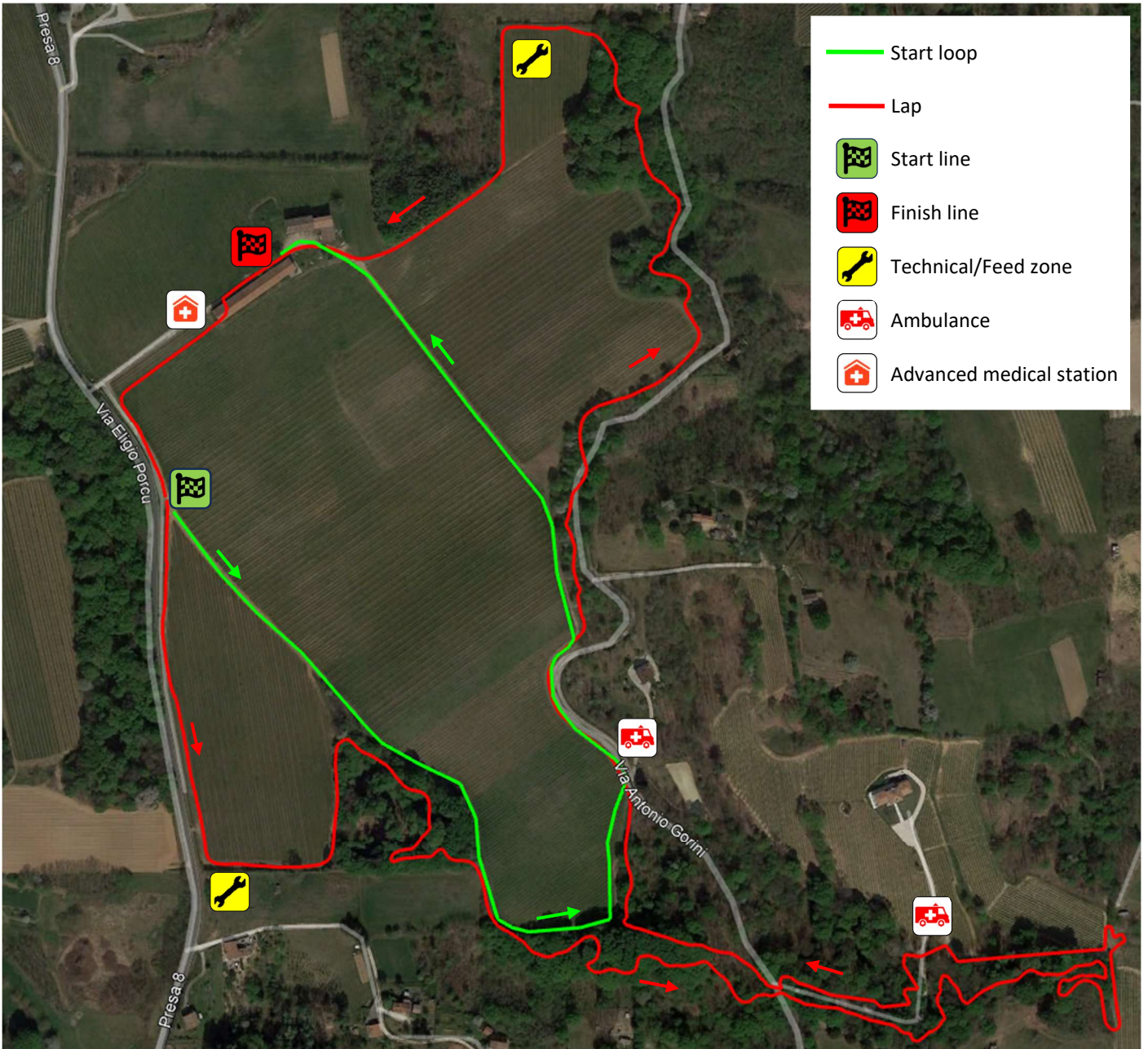
## 7. VENUE MAP



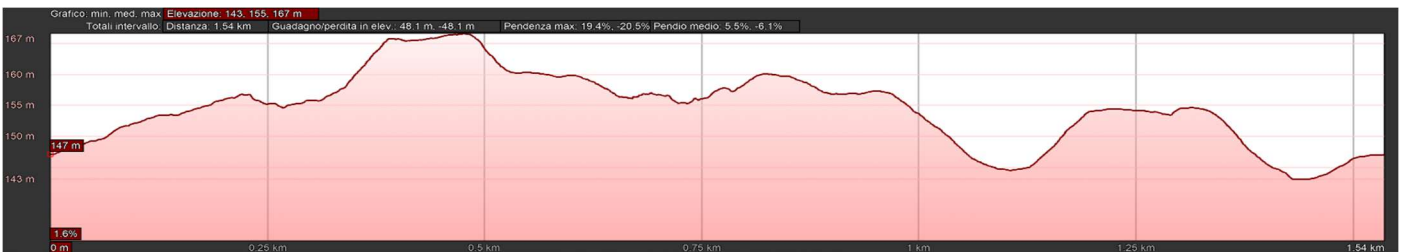
- |   |                      |   |                          |
|---|----------------------|---|--------------------------|
|  | Race office          |  | Food & beverages         |
|  | Awards ceremony area |  | Toilets                  |
|  | Team area            |  | Showers                  |
|  | Finish line          |  | Bike wash                |
|  | Anti-doping station  |  | Advanced medical station |



## 8. RACE MAP



### ELEVATION – START LOOP



### ELEVATION - LAP

